

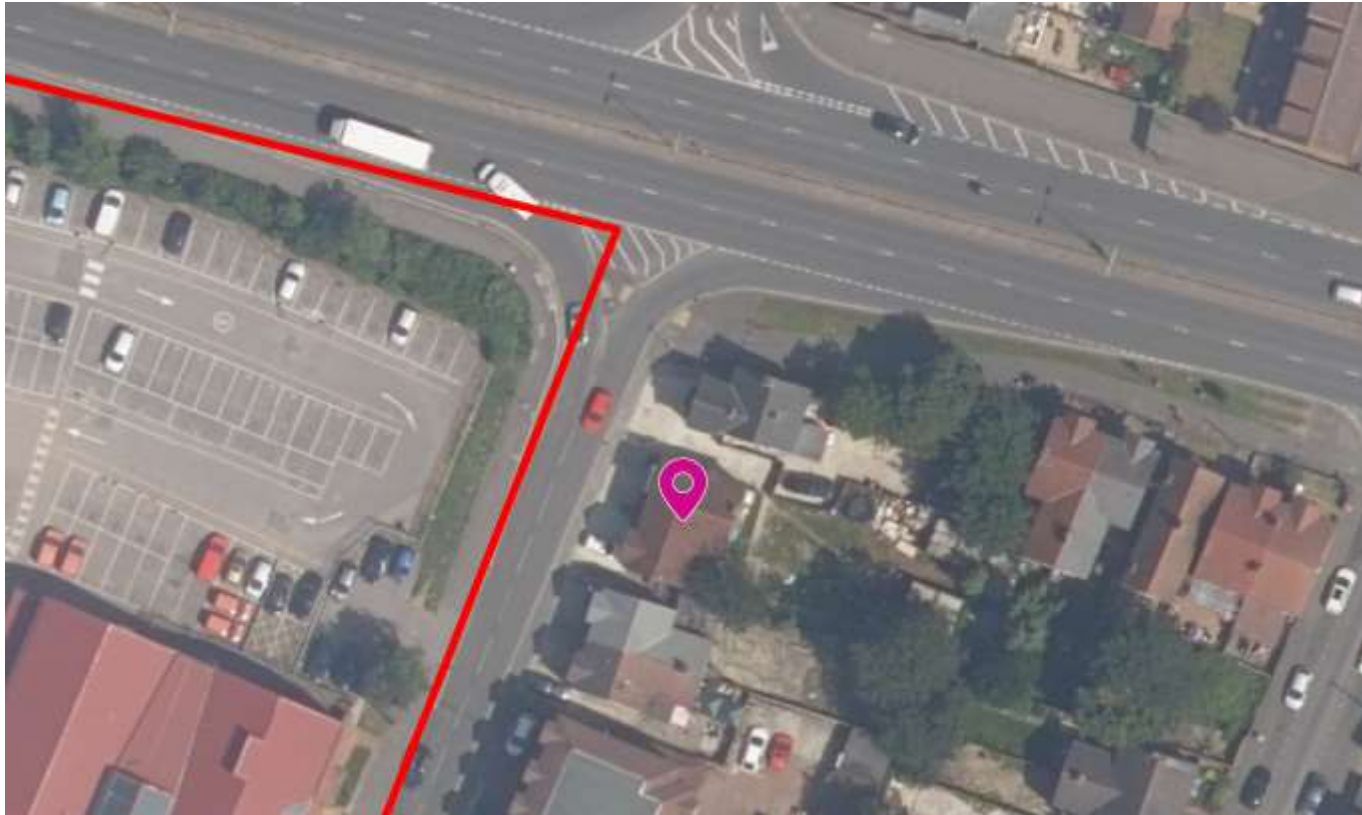
30-32 Wexham Road,
Slough, SL1 1UA

Ref: P/19443/000

2 - Site location



3 - Aerial context



4 – Street view of site (looking from east)



5 - View of the rear of properties



6 - View of land opposite



7 - View south towards High Street



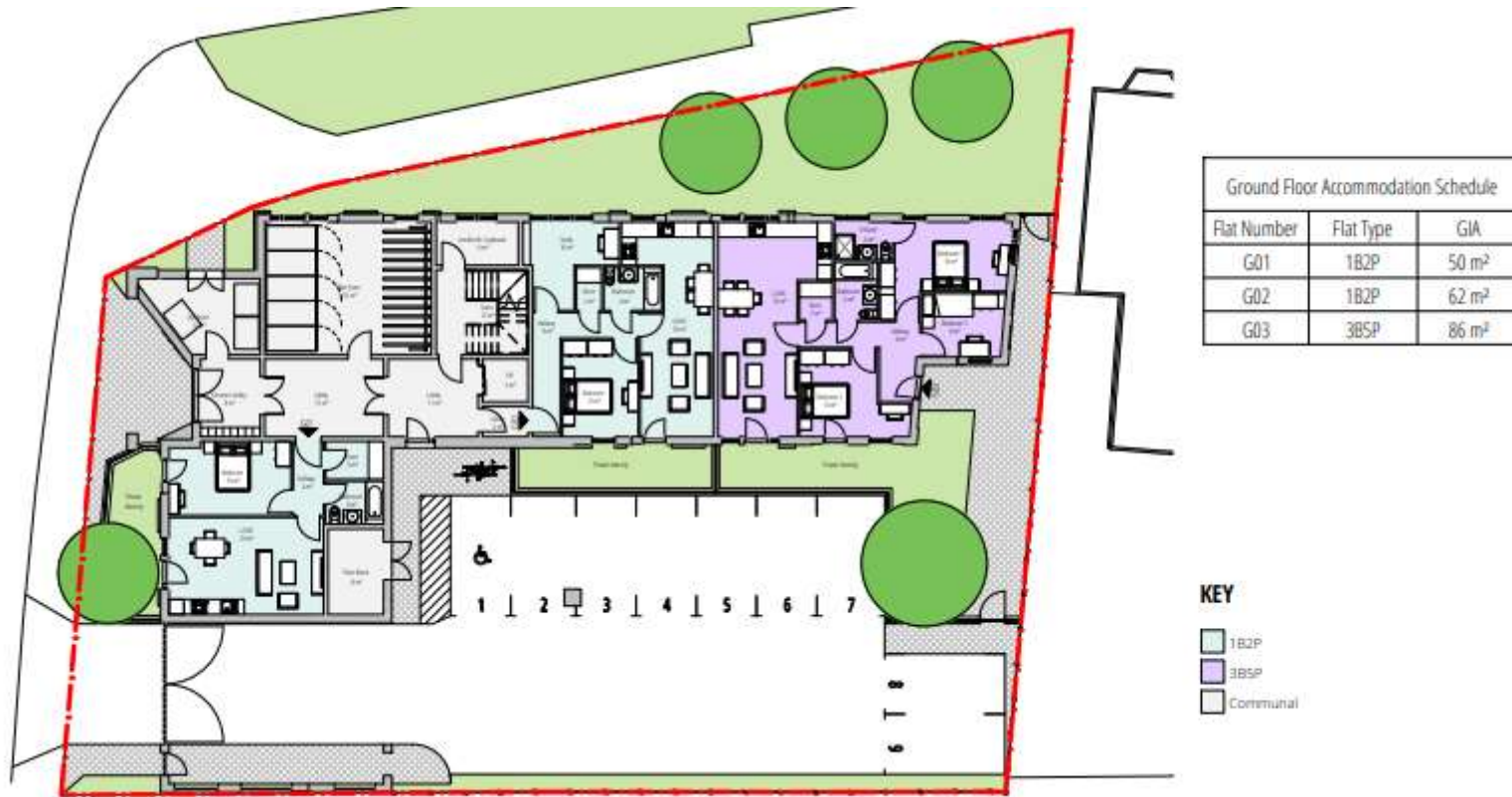
8 - View north across Wellington Street



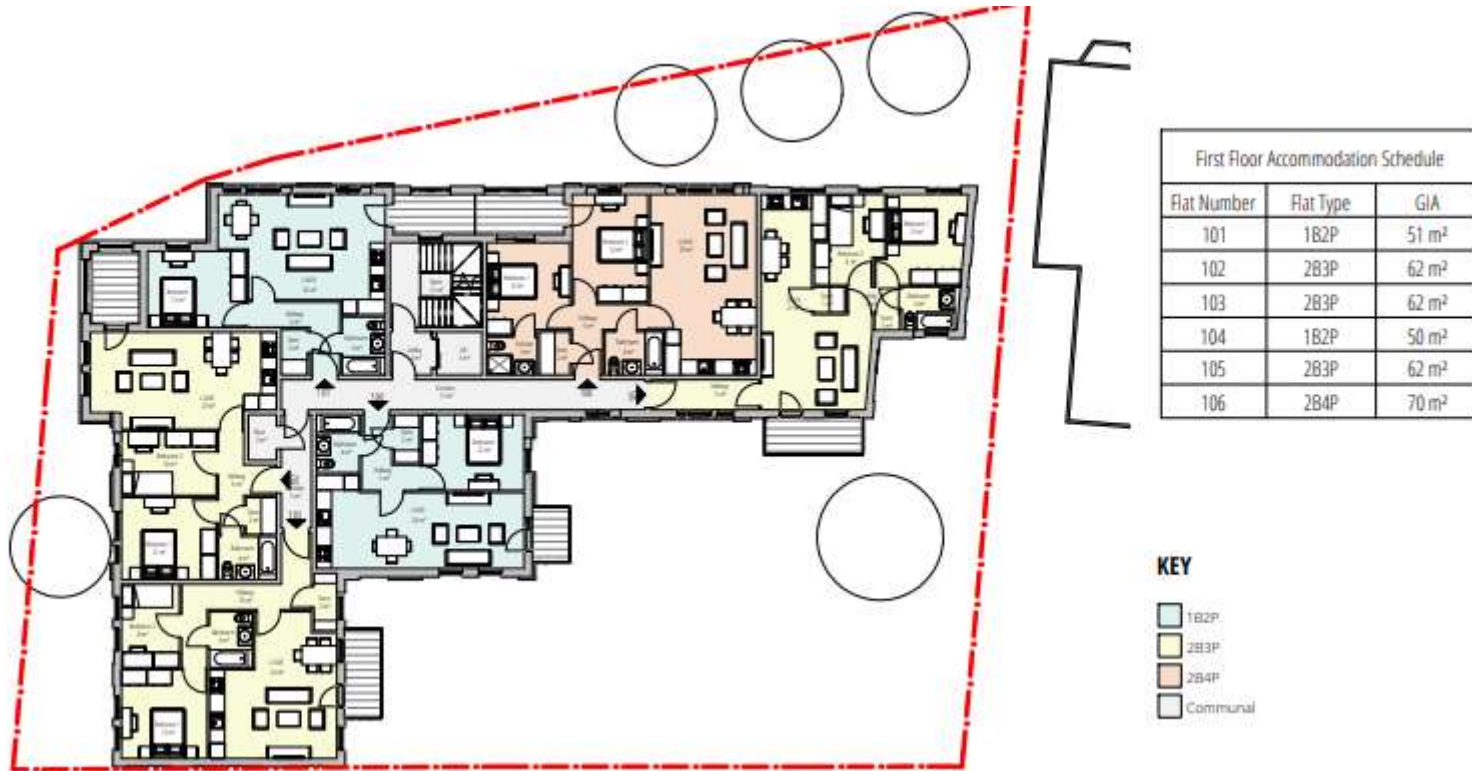
9 - Proposed site layout



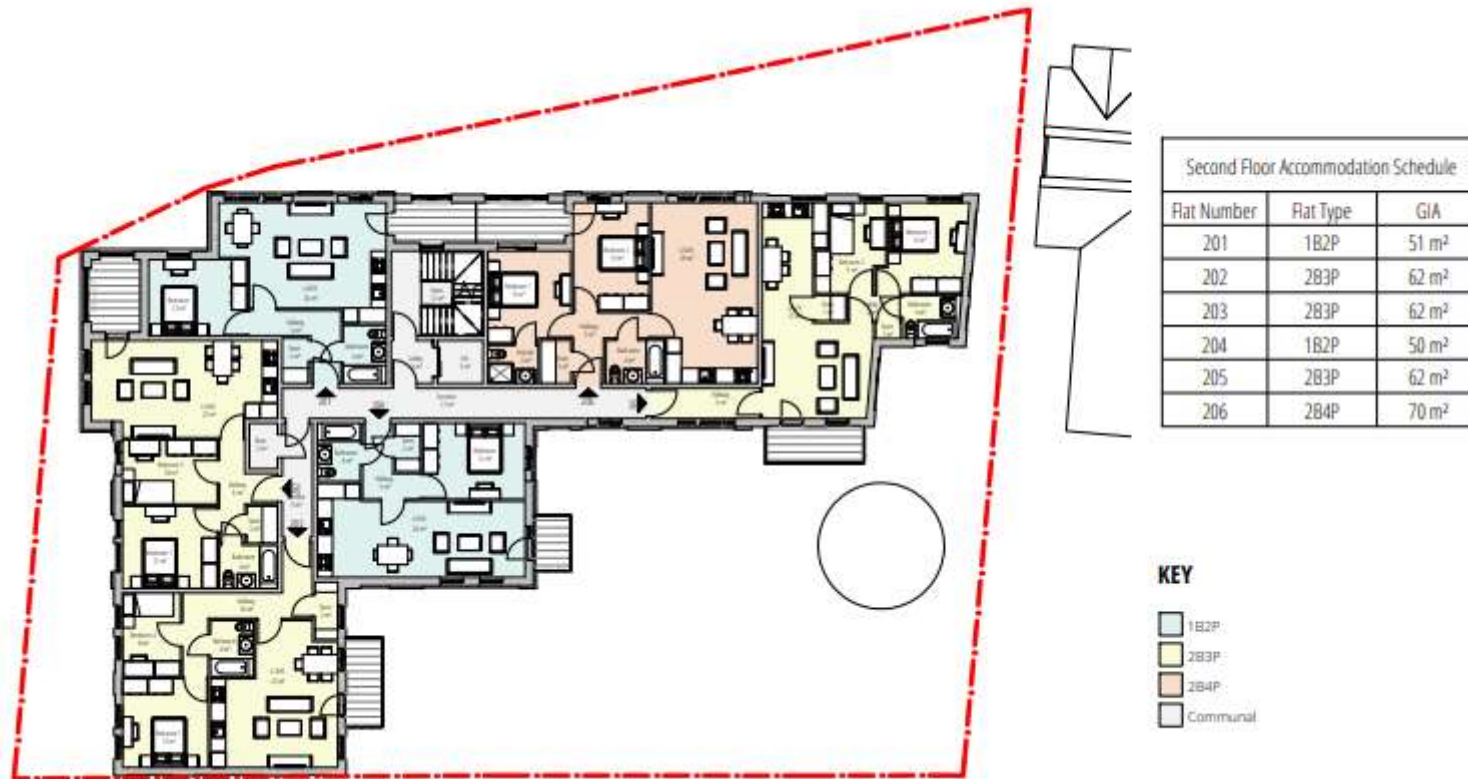
10 – Proposed ground floor layout



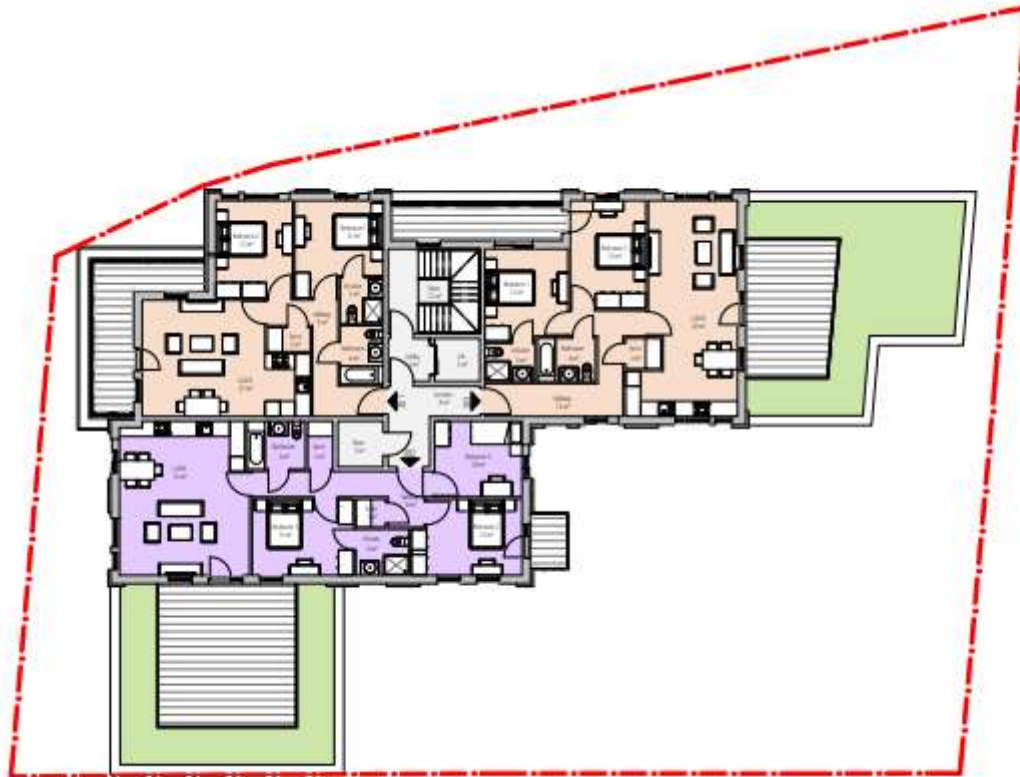
11 – Proposed 1st floor plan



12 – Proposed 2nd floor plan



13 – Proposed 3rd floor plan

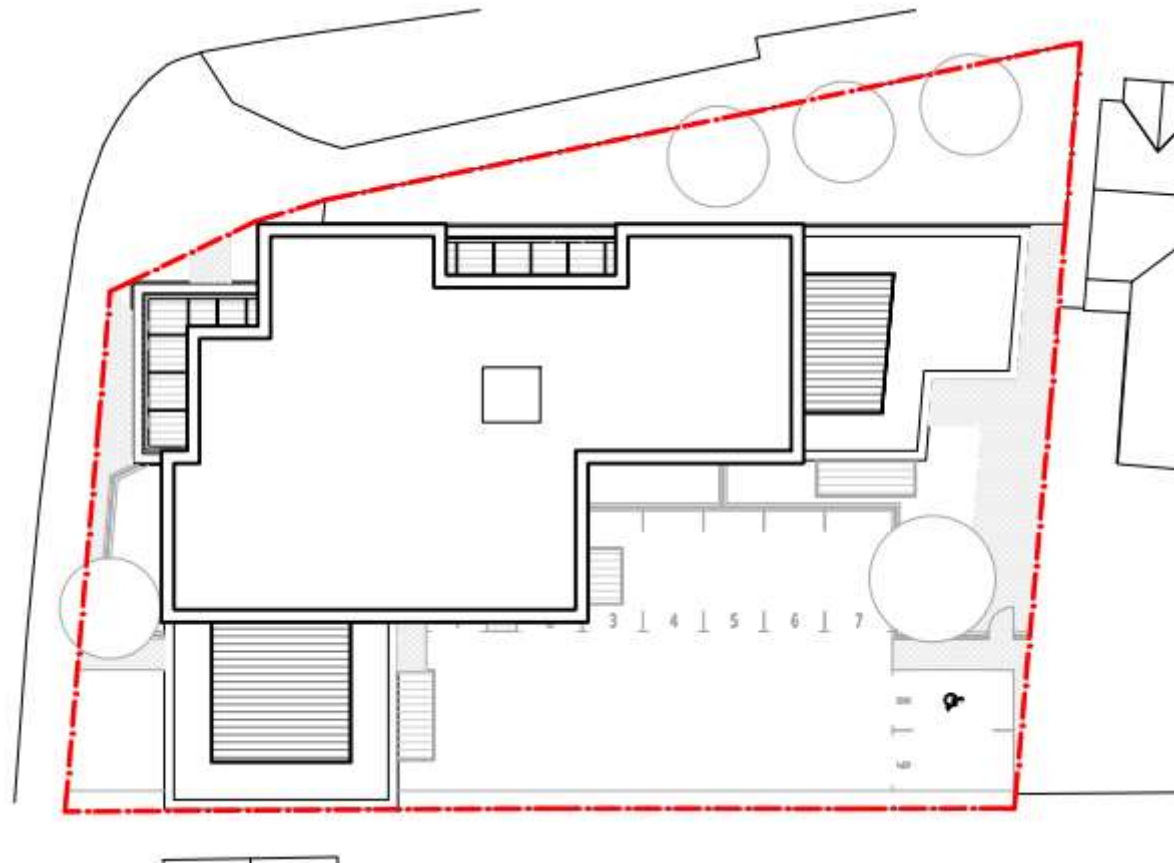


Flat Number	Flat Type	GIA
301	2B4P	70 m ²
302	3B5P	89 m ²
303	2B4P	79 m ²

KEY

- 2B4P
- 3B5P
- Communal

14 – Proposed roof level & poss. tree planting



15 – Proposed street context #1



2 Street Elevation - West (Wexham Road)

16 – Proposed street context #2



1 Street Elevation - North (Wellington Street)

17 - Proposed west side elevation – Wexham Road



18 - Proposed Wellington Street elevation



19 - Proposed east internal/flank elevation



20 – Proposed courtyard/south flank elevation



21 – materials palette



Fig 01: Proposed Brick Finish - Vandersanden Lima or similar



Fig 03: Material Palette Key Plan



Fig 02: Proposed External Door, Window, Railing and Aluminium Cladding Finish - Syntha Pulvin Bronze or similar